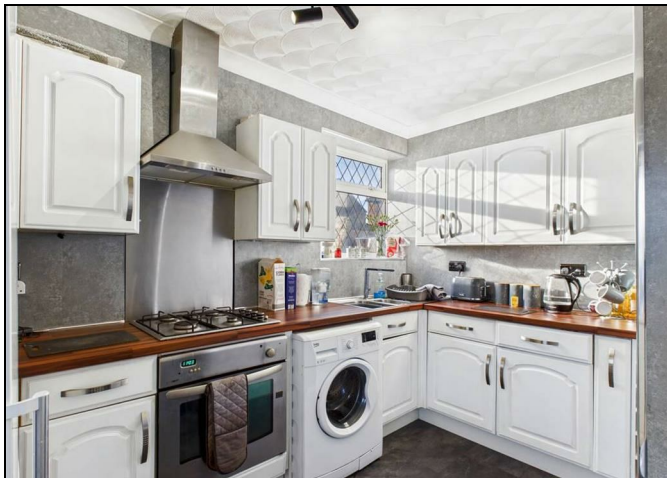


...Your proactive estate agent



Manor Drive, Featherstone, Pontefract, WF7 6AZ
Offers Over £200,000

Park Row



Hallway

1.20 x 3.37 (3'11" x 11'1")

Access to living room, bathroom and both bedrooms. Wood effect flooring. Central heated radiator.

Living Room

4.01 x 3.70 (13'2" x 12'2")

Feature fireplace with hearth and surround. Access to the kitchen. Wood effect flooring. UPVC double glazed window to the front of the property.

Kitchen

3.40 x 2.30 (11'2" x 7'7")

A range of high and low level white kitchen units with wood effect worktops. Integrated oven with four ring gas hob and extractor hood over. Option to reconnect plumbing for washing machine. Space for fridge/freezer. Side door to access to the rear of the property. Tiled effect flooring. Central heated radiator. UPVC double glazed window to the rear.

Entrance

1.30 x 1.60 (4'3" x 5'3")

Access to the garden.

Main Bedroom

3.40 x 3.22 (11'2" x 10'7")

Wood effect flooring. Central heated radiator. UPVC double glazed window looking to the rear.

Bedroom Two

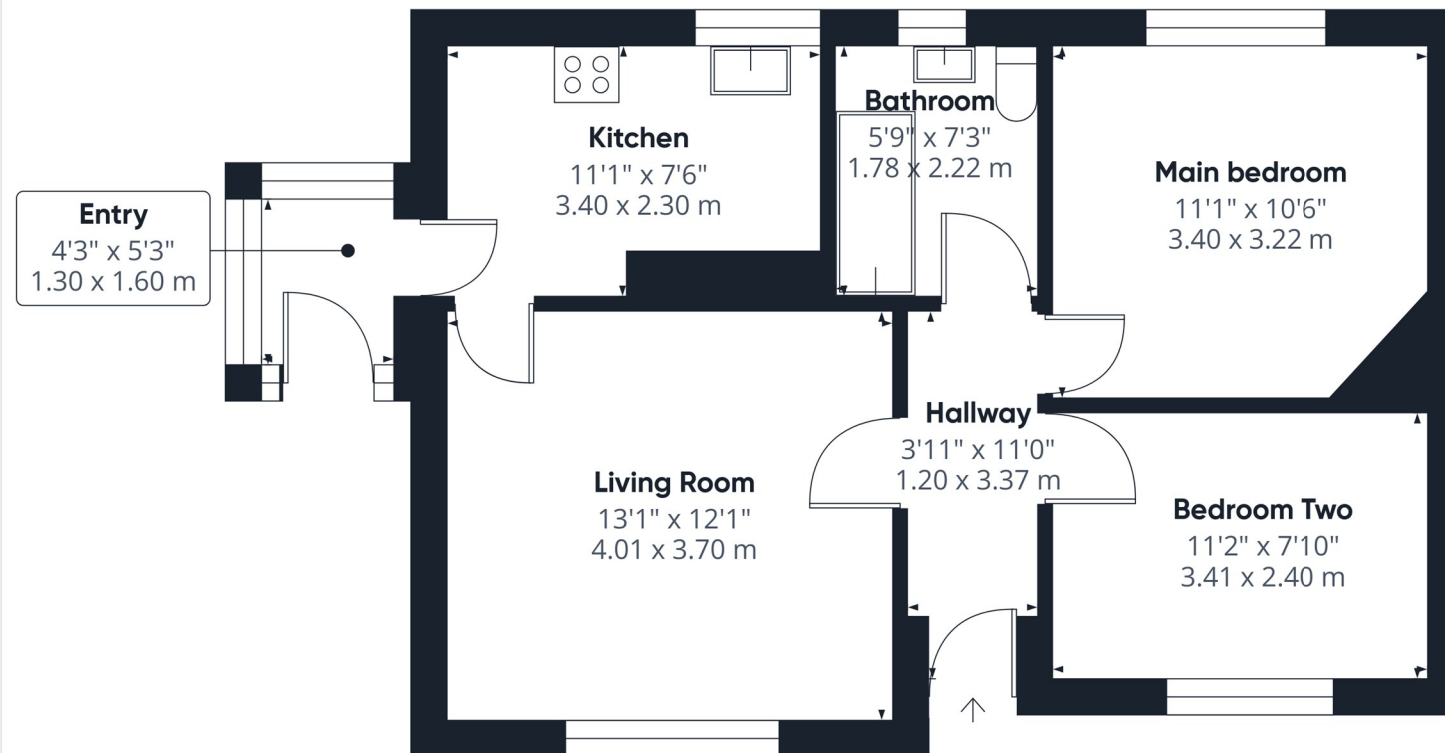
3.41 x 2.40 (11'2" x 7'10")

Wood effect flooring. Central heated radiator. UPVC double glazed window looking to the front of the property.

Bathroom

1.78 x 2.22 (5'10" x 7'3")

White suite comprising of panel bath with chrome taps, mains feed shower and shower screen. Wash hand basin with chrome mixer tap over and storage cupboard below. WC with low level flush. Extractor fan. Tiled effect flooring. Central heated radiator. UPVC frosted double glazed window looking to the rear aspect.



Approximate total area^m
555 ft²
51.5 m²

(1) Excluding balconies and terraces

Calculations reference the RICS IPMS 3C standard. Measurements are approximate and not to scale. This floor plan is intended for illustration only.

GIRAFFE360

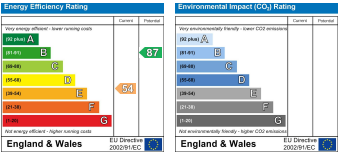
T 01977 791133

W www.parkrow.co.uk

17-19 Cornmarket, Pontefract, West Yorkshire, WF8 1AN
pontefract@parkrow.co.uk



T 01977 791133
W www.parkrow.co.uk
17-19 Cornmarket, Pontefract, West Yorkshire, WF8 1AN
pontefract@parkrow.co.uk



Park Row